

**CAMP BARKELEY, TEXAS**



## INTRODUCTION

**CAMP BARKELEY . . .** one of the great training centers of the United States Army, is located approximately 10 miles southwest of Abilene, Texas, a thriving city of some 30,000 persons, located in the center of the state. The camp was named to honor the memory of Private David Barkeley, a soldier from Texas who in the World War won the Medal of Honor (Posthumously Awarded) for an outstanding deed of bravery in which he lost his life. The Military Reservation proper on which the camp is built comprises approximately 2,400 acres of leased land. Adjoining this area is a tract of approximately 68,000 acres also under lease to the United States Government for rifle ranges, small arms and artillery ranges and for general training and maneuver purposes. Originally Camp Barkeley was set up as a tent camp for training the 45th Division; a small service detachment also was then present. In the Fall of 1941 it was converted into a semi-permanent camp with frame Administration Buildings, Day Rooms, Theatres, Service Club, Guest House, Cold Storage and Warehouses. The camp has now been expanded to include the Medical Replacement Training Center and an enlarged Corps Area Service Command.

**THE 45TH DIVISION . . .** is a partially motorized Infantry Division, consisting of a Headquarters, two Infantry Brigades, one Artillery Brigade, and Special Troops. Its equipment in major items including motors is practically complete.

**THE TRAINING PROGRAM . . .** of the Division is broad and varied. Training aids in the form of ranges for all arms are close at hand, are well laid out and well equipped.

**THE MEDICAL REPLACEMENT TRAINING CENTER . . .** consists of a Headquarters and four Battalions. On arrival at Camp Barkeley, the Trainee is assigned to a training battalion and company. The Battalion is headed by a Commissioned Officer and is divided into four companies of approximately 250 men each, headed by a Commissioned Officer (generally a Captain) who is known as the "Company Commander." Each company is divided into Platoons which are headed by Lieutenants. The Lieutenants with their Sergeants and Corporals are responsible for the training in drill formations. The Sergeants, Corporals and Privates, First Class, constitute a "Cadre," a term used to designate the nucleus of a company. The officers and these Cadres are permanently assigned to the Training Center.

a. All officers are cognizant of the adjustments trainees must make and are ready at all times to cooperate in the solution of their problems . . . in return the officers expect wholehearted cooperation in carrying out the training program.

b. At this Center the trainees are given an intensive course of thirteen weeks, designed to furnish a thorough

grounding in military discipline and basic training that will fit them to take their place with medical detachments attached to tactical organizations, with medical units or at hospitals. There is training in duty as orderly and table waiting, Kitchen Police, and other necessary house-keeping duties are so equitably distributed as not to become burdensome. Training in leadership is developed by designating trainees from time to time as acting Non-commissioned officers.

**APTITUDE TESTS . . .** for trainees are completed within three or four days after arrival and trainees are selected on the basis of civilian experience for assignment to specialized duties such as cooks, clerks, auto mechanics, et cetera. Every effort is made to place men where they will benefit to the greatest extent to the Army and to themselves. Doctors, lawyers, merchants, truck drivers, cowboys, artists . . . men from all walks of life . . . approximately 16,000 will pass through the Medical Replacement Training Center annually and become buddies for the thirteen weeks training period and many of them no doubt will establish close friendships for life.

**CORPS AREA SERVICE COMMAND . . .** is made up of Regular, Reserve and National Guard officers and Regular Army enlisted men. It is the mission of the Corps Area Service Command, within the limits of its personnel and funds, to serve the field forces while in garrison and to aid the Medical Replacement Training Center to its utmost capacity. The Corps Area Service Command and the Cadres with the Medical Replacement Training Center are commonly referred to as the permanent personnel of the camp.

**MESSES . . .** Only the best of food is bought. It is carefully inspected and under the immediate supervision of the unit Mess Sergeant, is prepared by trained cooks.

**INFIRMARIES . . .** are located in each tactical area and sick call is held daily. If ailing, the soldier reports to his Sergeant who sends him to the Infirmary accompanied by a non-commissioned officer. If found advisable by the attending surgeon, he is sent to the well equipped and well manned station hospital.

**UNIFORMS . . .** As soon as clothing and equipment are received by the supply service, it is passed on to the men through the company supply Sergeant who also has charge of laundry, dry cleaning and shoe repair.

**THE FIELD HOUSE . . .** is well lighted and designed for its purpose of affording a place indoors for athletic and recreational exercise.

**TRANSPORTATION . . .** Regular half-hour service from the camp to Abilene is maintained by a local bus company. The city terminal is at the Southwest Greyhound Station where connections may be had to all points.

**PASSES AND LEAVES . . .** are liberally given after Retreat and on week-ends. Over-night passes are obtainable through the Company Commander. In exceptional cases longer leaves may be obtained.



**COL. FAY WARRINGTON BRABSON**  
*Commanding Officer, Camp Berkeley*



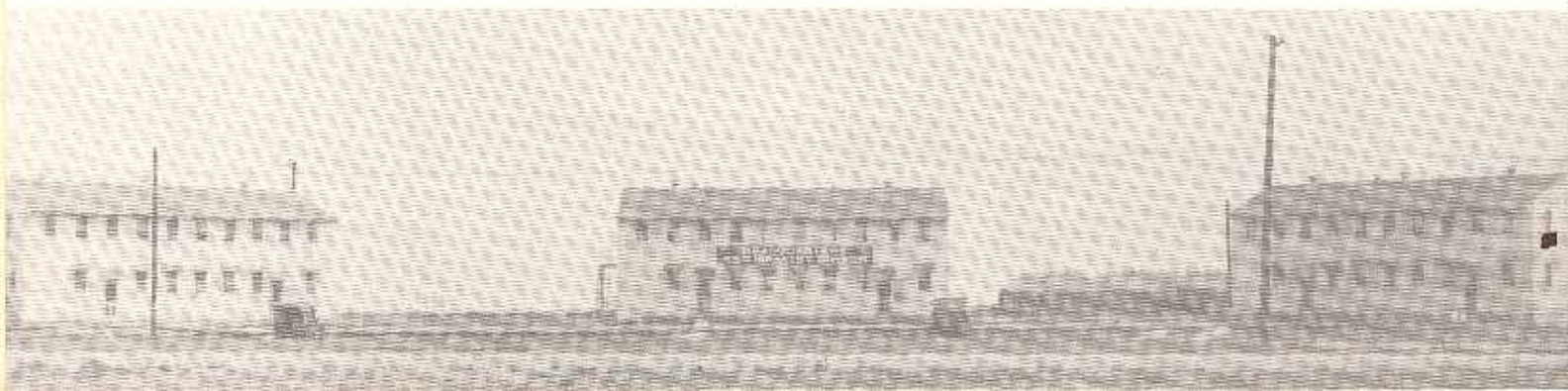
**COL. ROY C. HEFLEBOWER**  
*Commanding Medical Replacement  
Training Center*



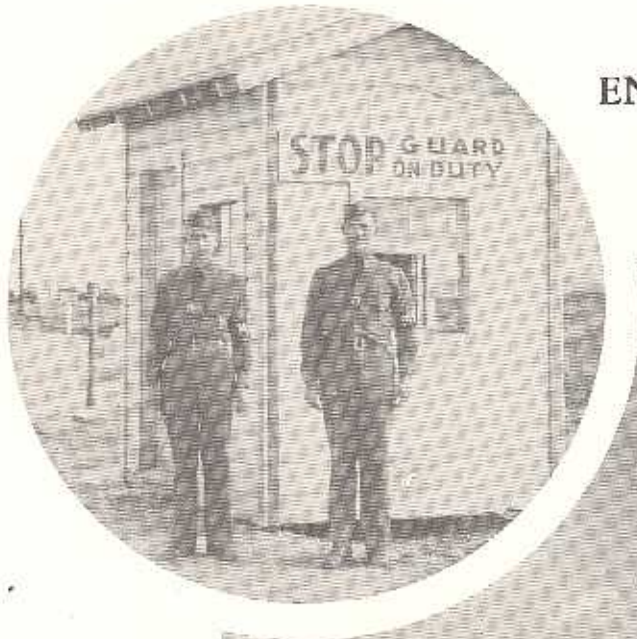
**MAJOR GENERAL WM. S. KEY**  
*Commanding 45th Division*



CAMP HEADQUARTERS  
TACTICAL DIVISION HEADQUARTERS



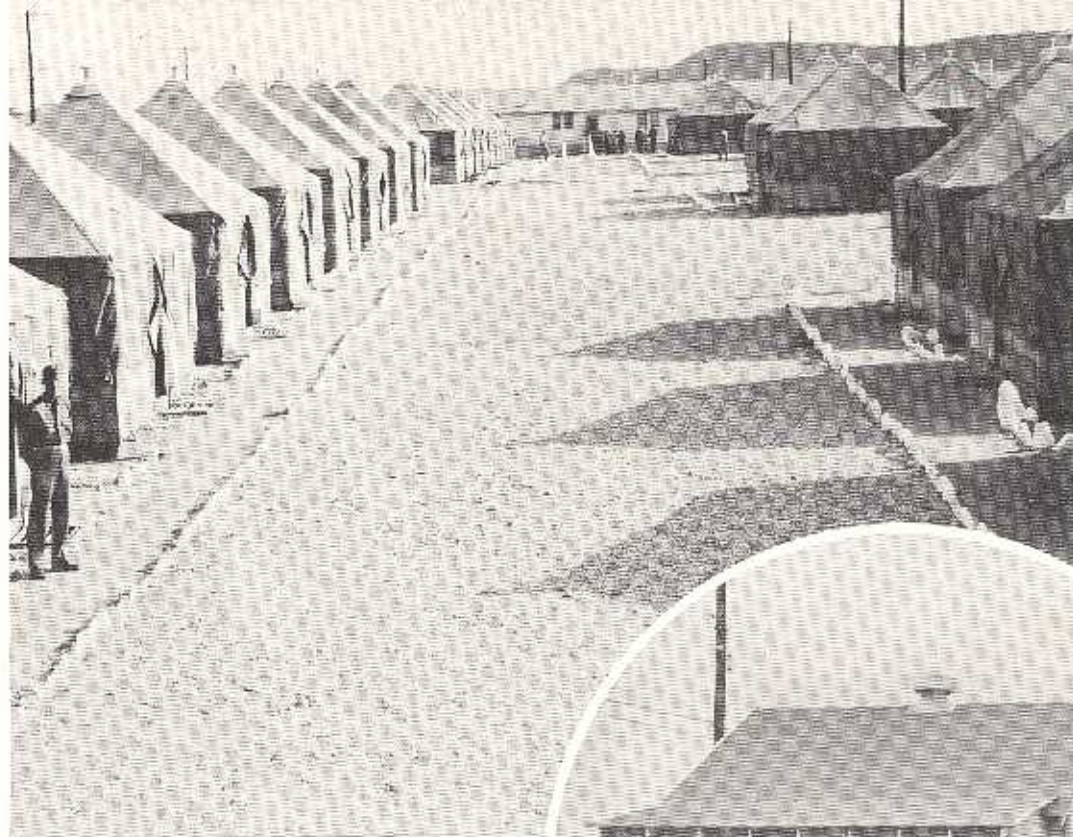
ENTRANCE GUARDS



AERIAL VIEW



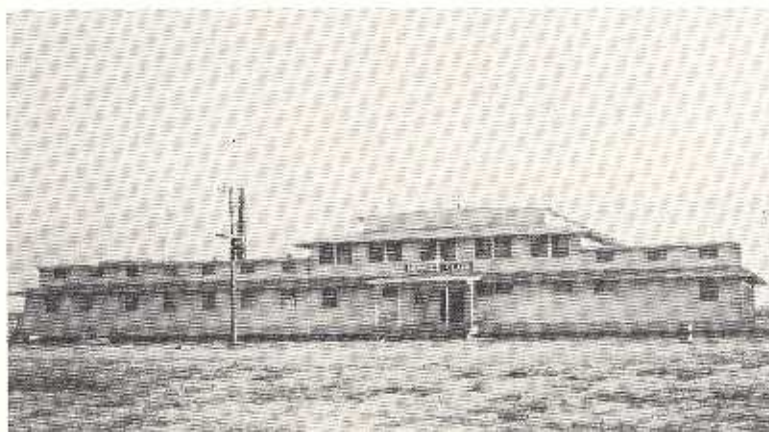
ENLISTED MEN'S  
QUARTERS



MEDICAL MEN'S  
BARRACKS



REGIMENTAL COMMANDER'S  
QUARTERS



COMPANY MESS HALL



COMPANY RECREATION HALL



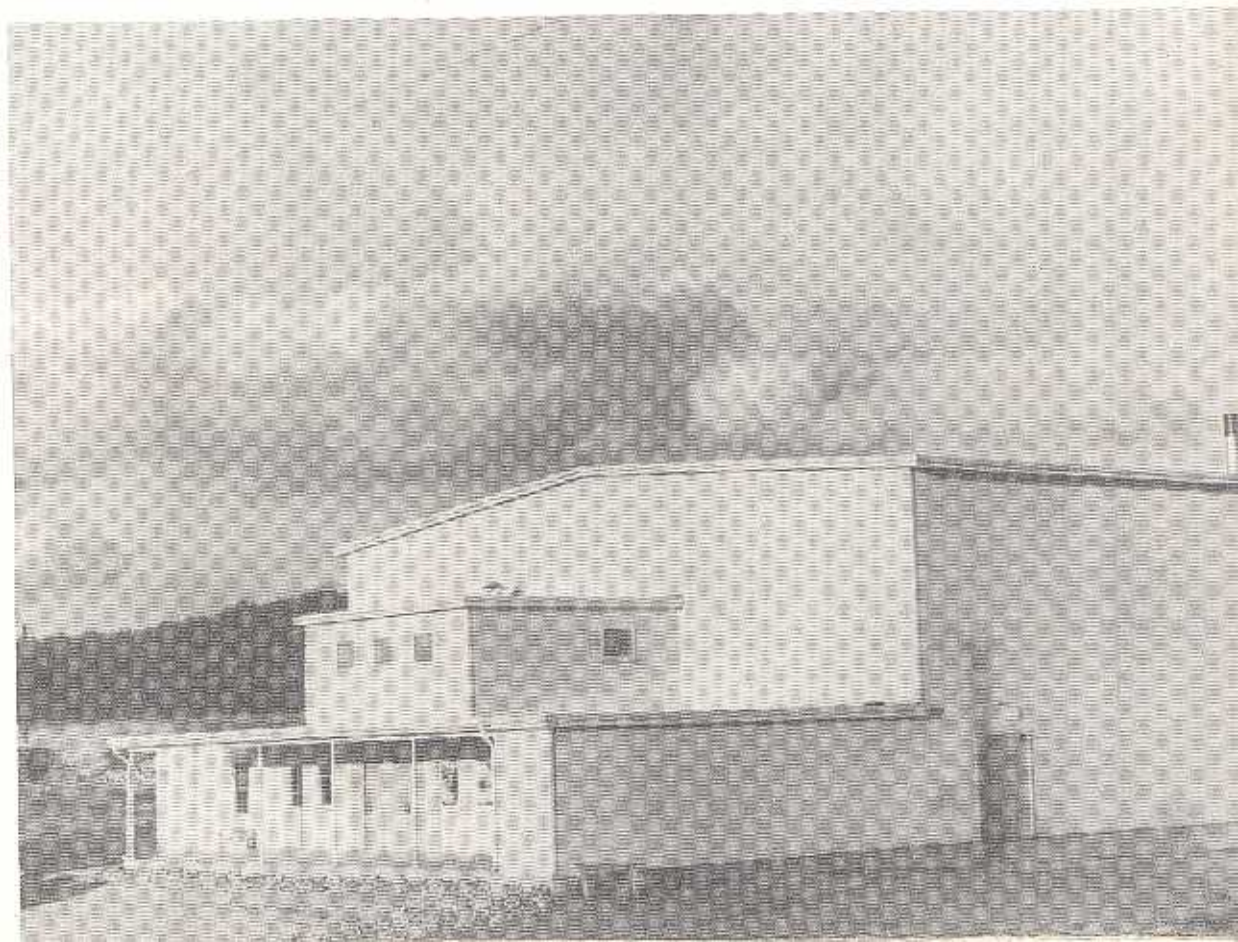
COMPANY COOKS



FIRST CAMP THEATRE

NEW  
THEATRES

Camp Barkeley has  
three modern theatres



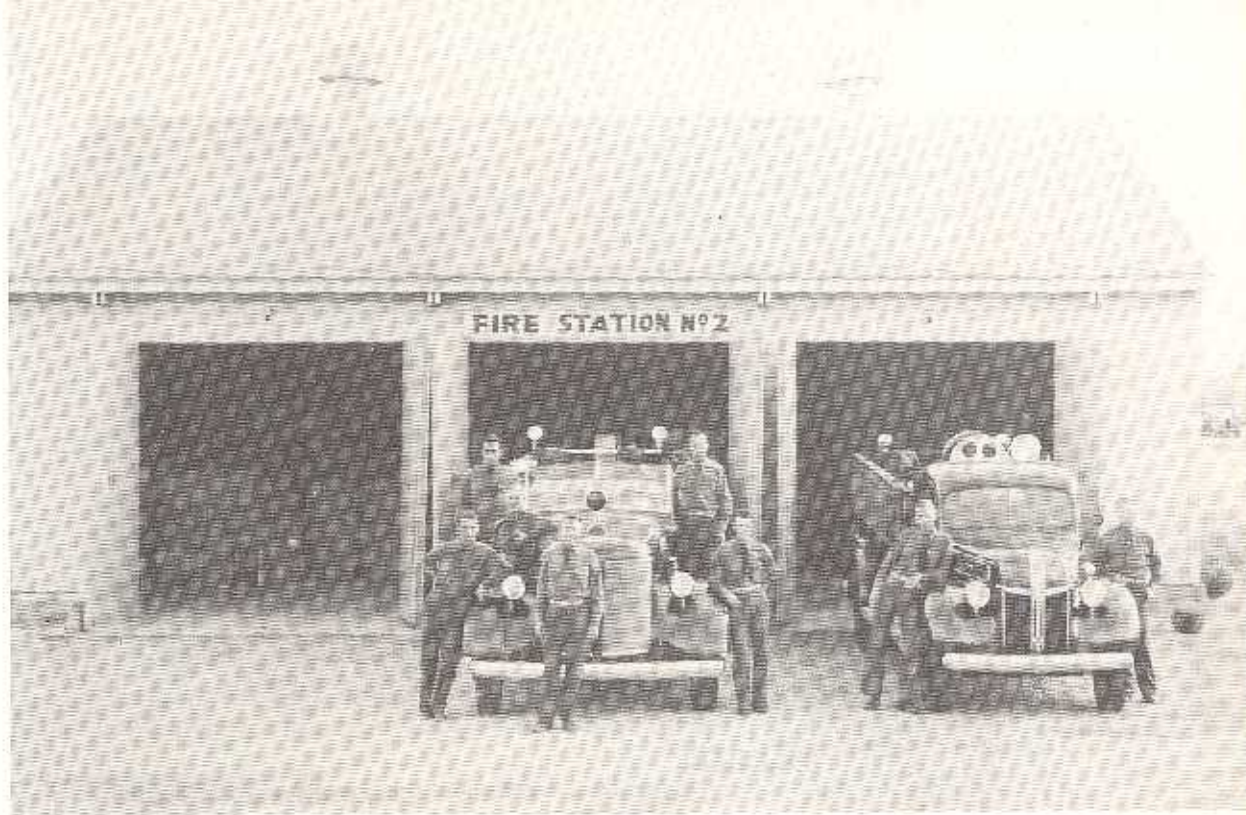


SIGNAL  
COMMUNICATIONS

COMMUNICATIONS BUILDING



FIRE STATION



OFFICERS  
QUARTERS



OFFICERS CLUB



INTERIOR MAIN  
CAMP EXCHANGE



INTERIOR-OLD  
TENT EXCHANGE



The Main Camp Exchange has 16 branches, ("stations"), including a hospital exchange - each has a complete line of essentials - shaving cream, tobacco, magazines, clothing, soft drinks, stationery, etc. The Camp Exchange is operated as a cooperative enterprise and the profits are turned back to the men in the form of athletic equipment, special dinners, etc. The men may obtain coupons books in advance of pay day and use these at the Exchanges.

BARBER SHOP



MAIN CAMP  
EXCHANGE



INTERIOR OF  
WAREHOUSE



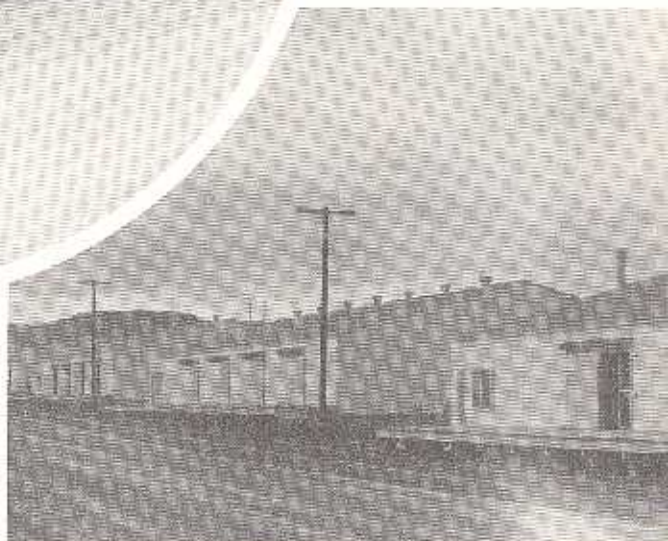
CAMP EXCHANGE  
OFFICE



WAREHOUSES



CAMP  
EXCHANGE  
WAREHOUSE



FATIGUE



WINTER DRESS



SUMMER DRESS

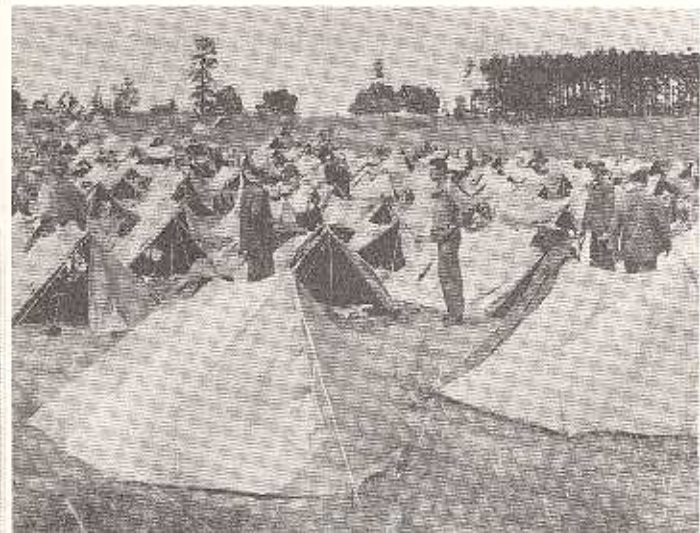
SUMMER DRILL

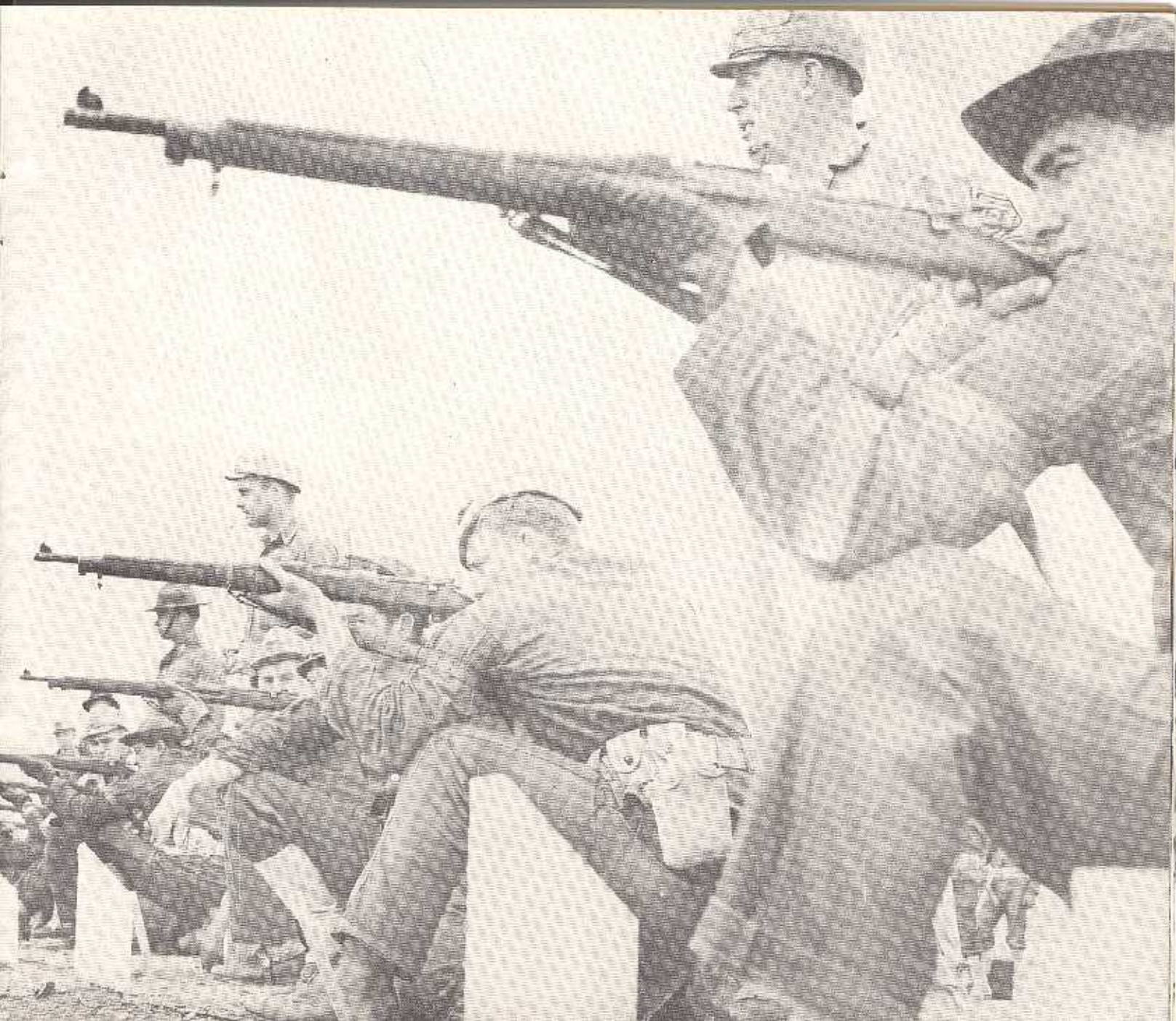


UNIFORMS WORN BY ENLISTED MEN

## FIELD INSTRUCTION









DOCTORS  
AND NURSES  
DINING HALL

NURSES RECEPTION ROOM

NURSES QUARTERS





ADMINISTRATION BUILDING



SICK WARD



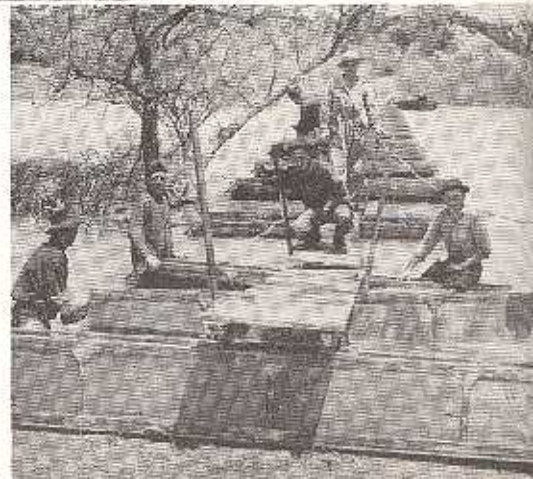
DENTAL CLINIC



HOSPITAL CAFETERIA



THE ARMY TAKES  
TO THE WATER!





K. P. DUTY

PREPARING FOR INSPECTION



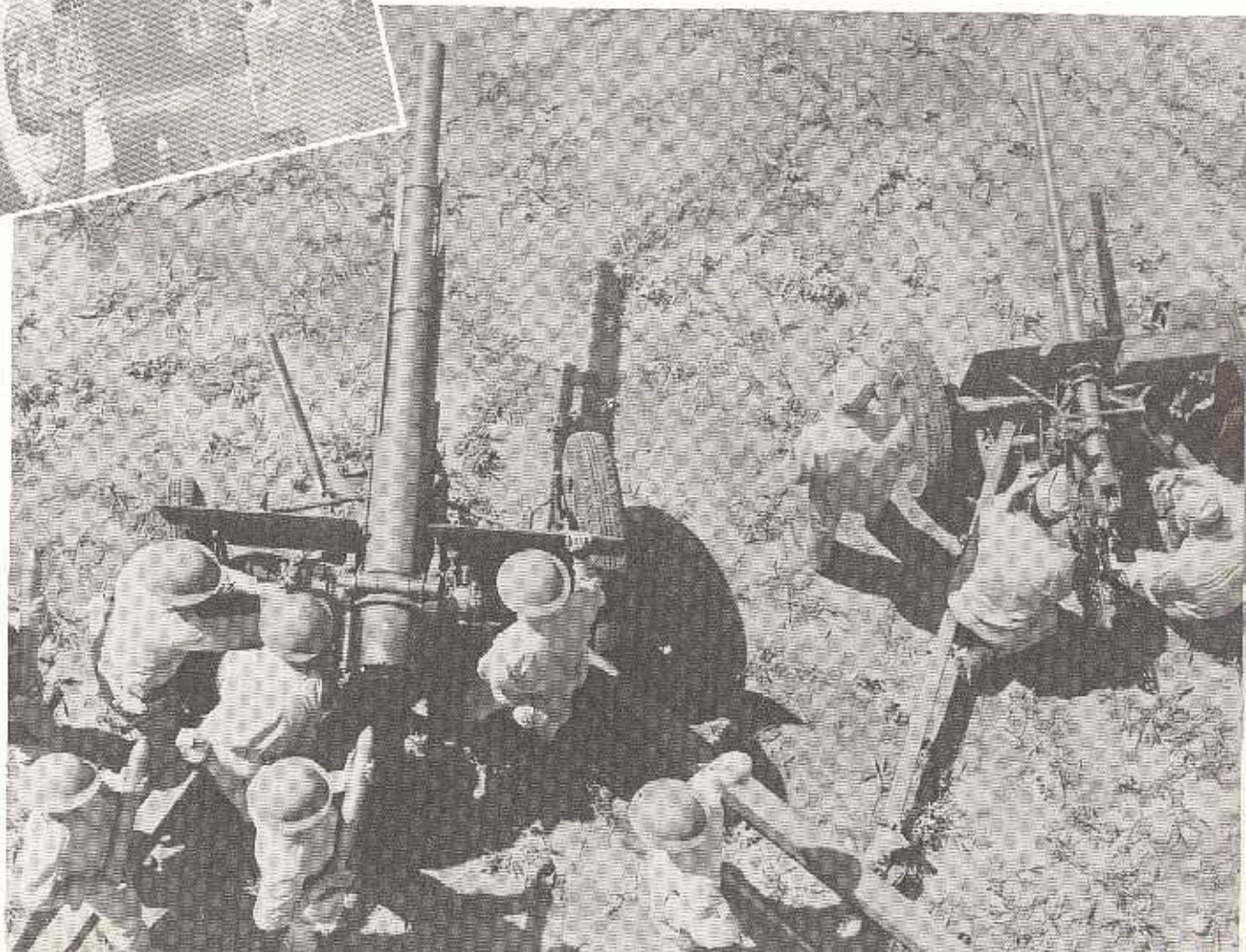
# PARADE

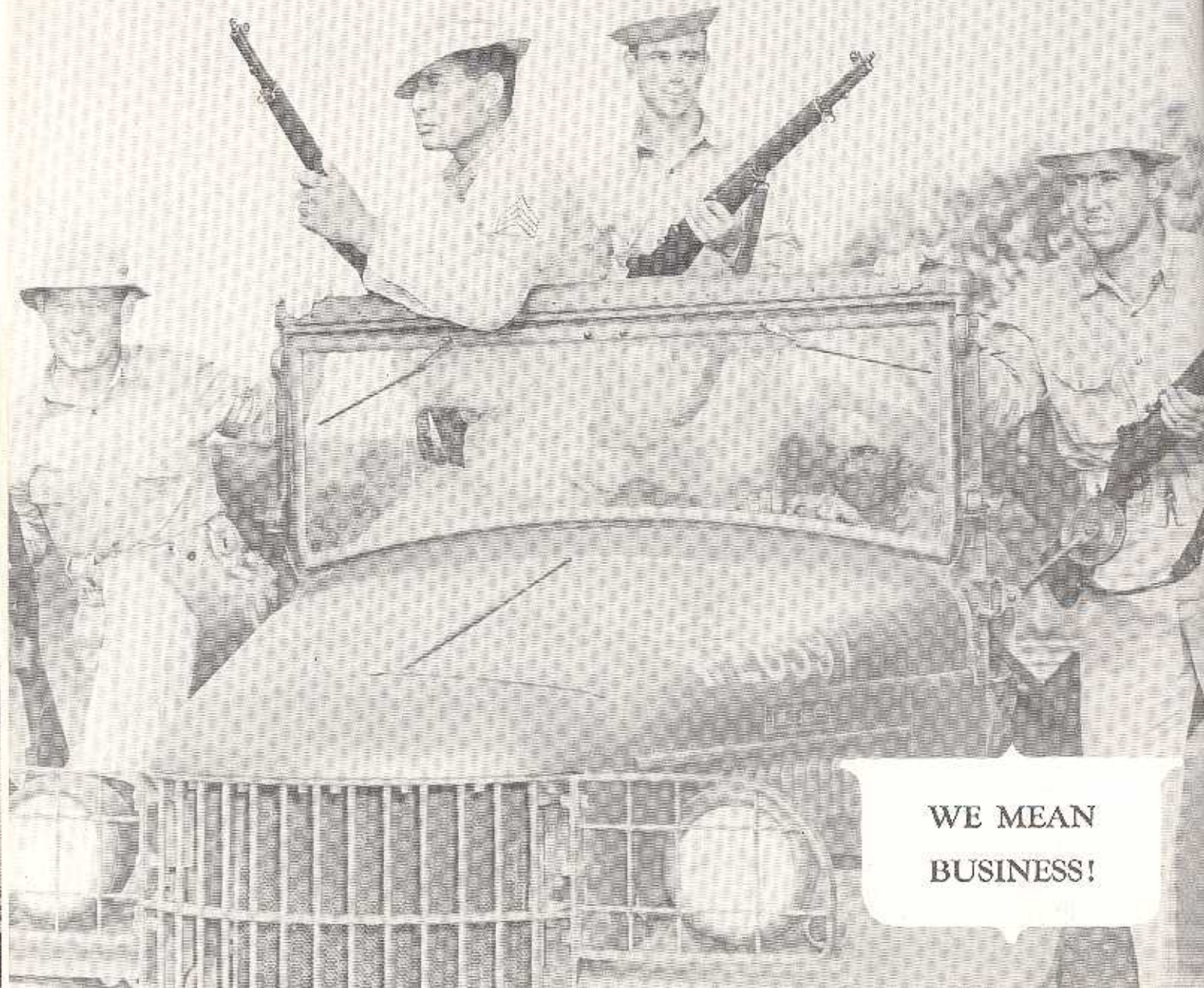


## ANTI-TANK ARTILLERY



HOWITZER



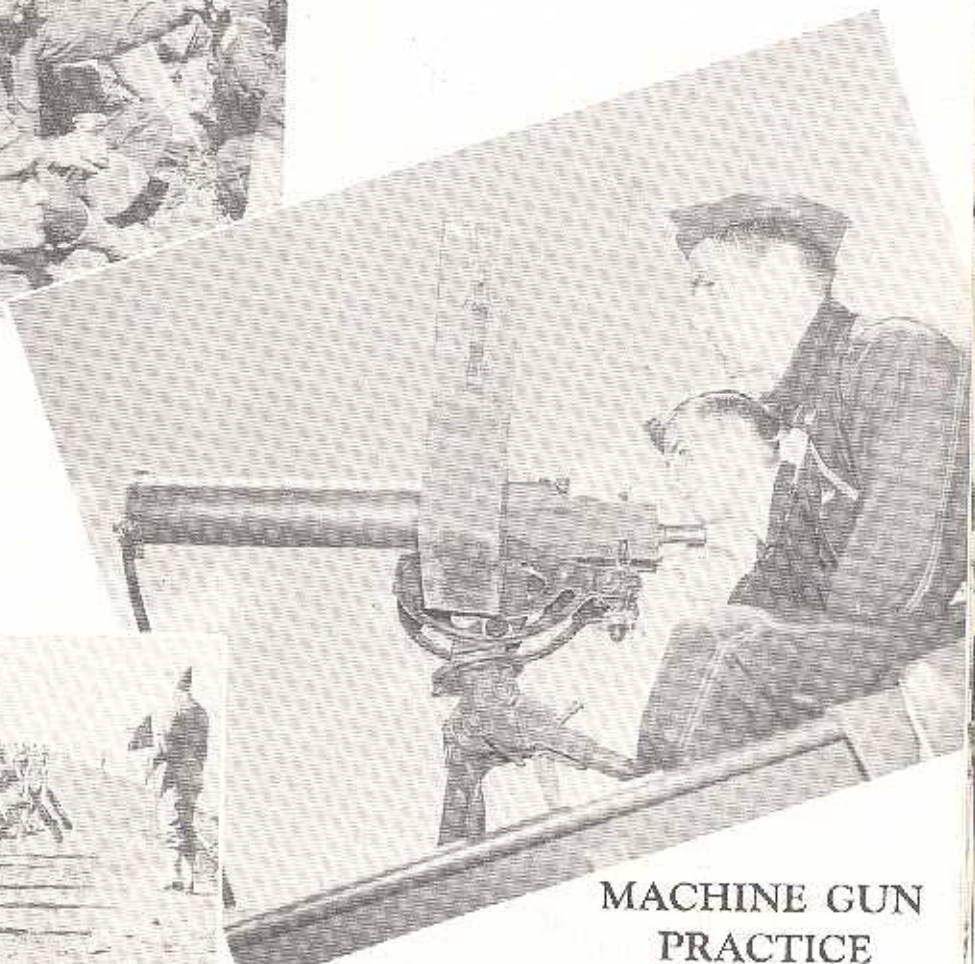
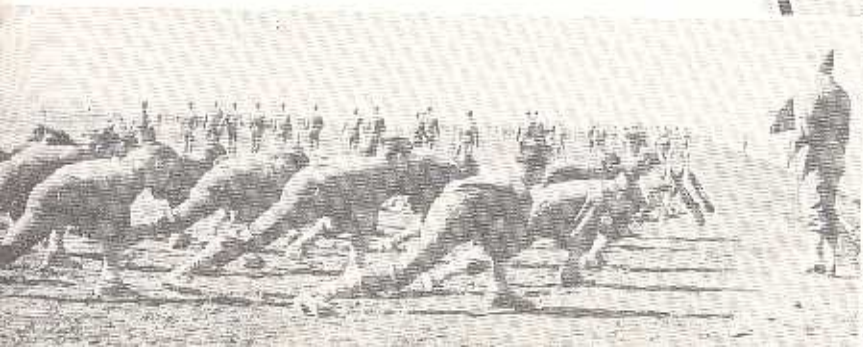


WE MEAN  
BUSINESS!



TIME OUT FOR REST

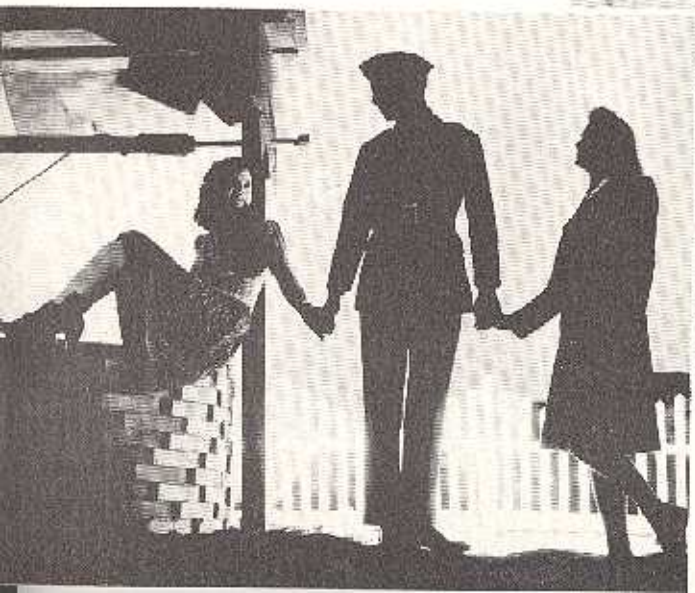
CALISTHENICS



MACHINE GUN  
PRACTICE



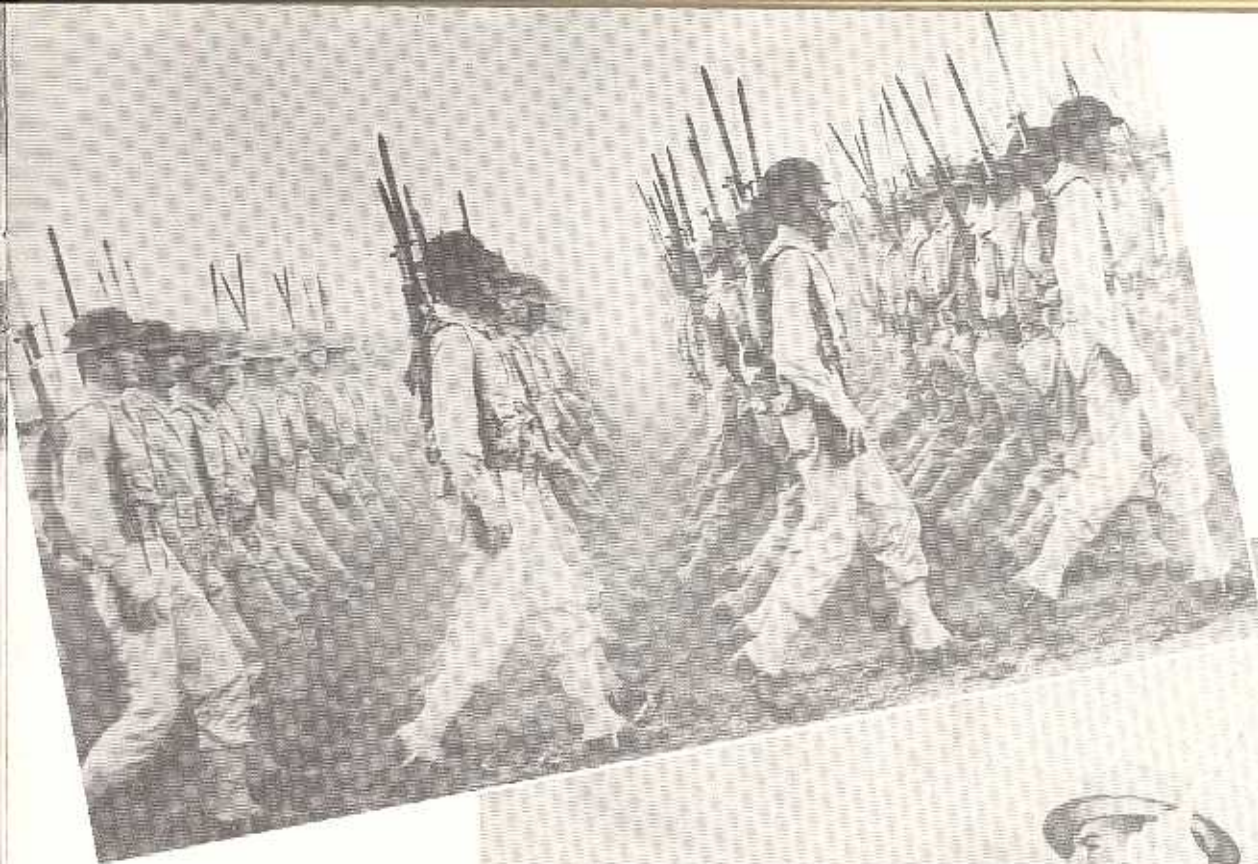
OFF DUTY





ARRIVAL DAY  
AT CAMP BARKELEY







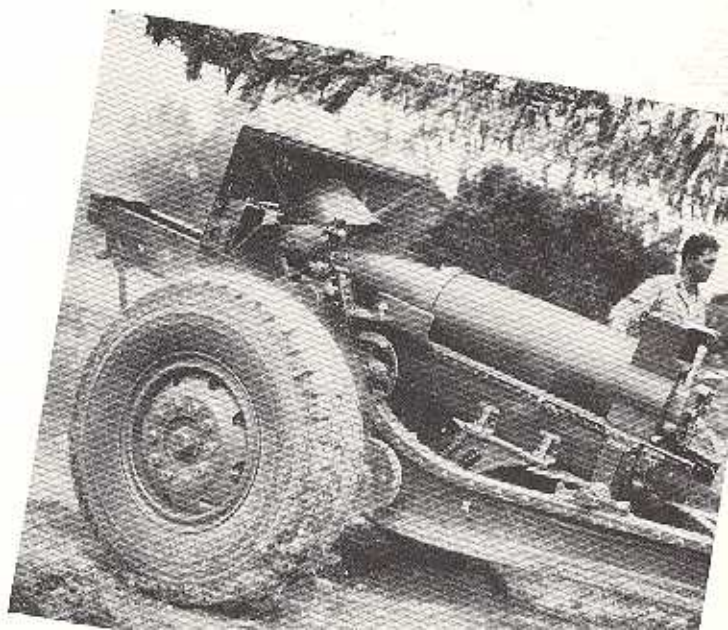
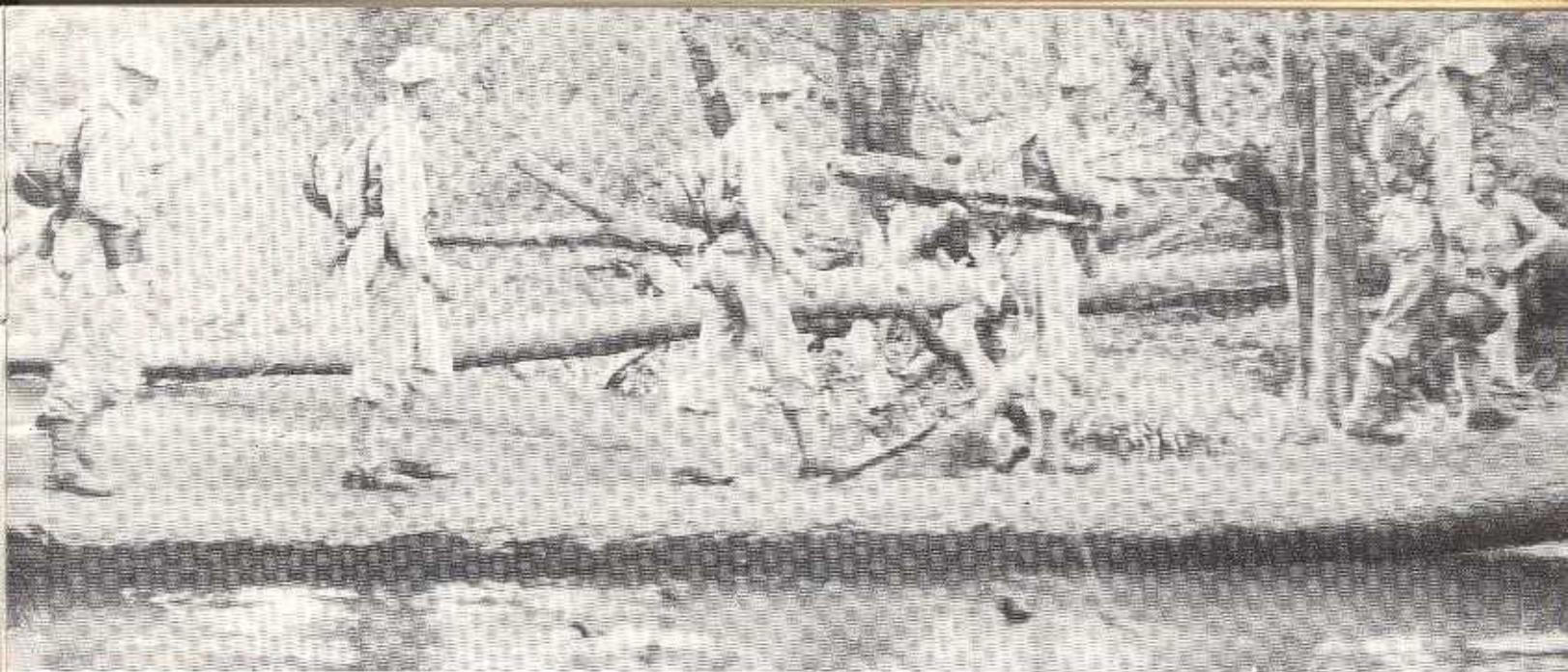
**GAS PRACTICE**

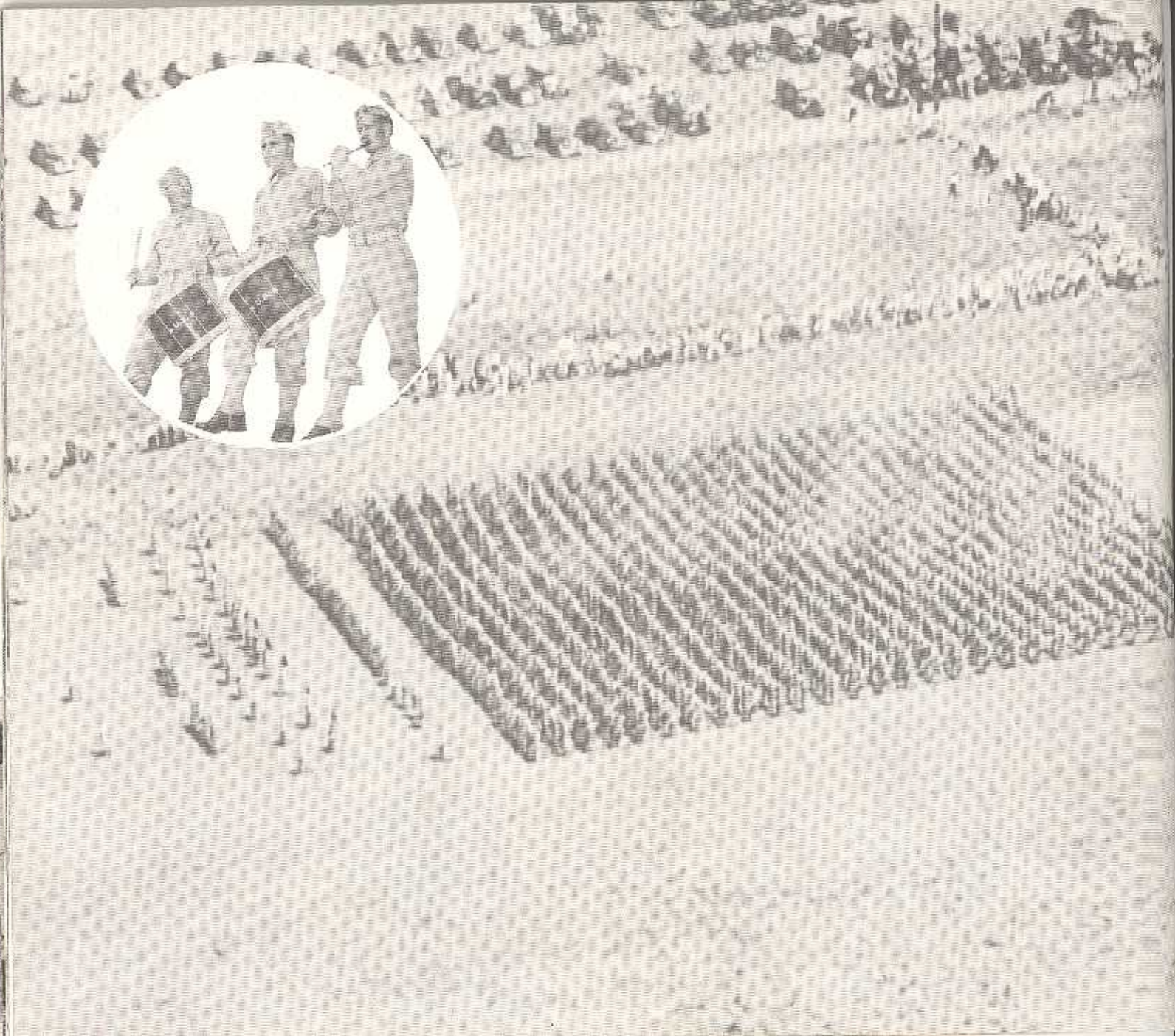


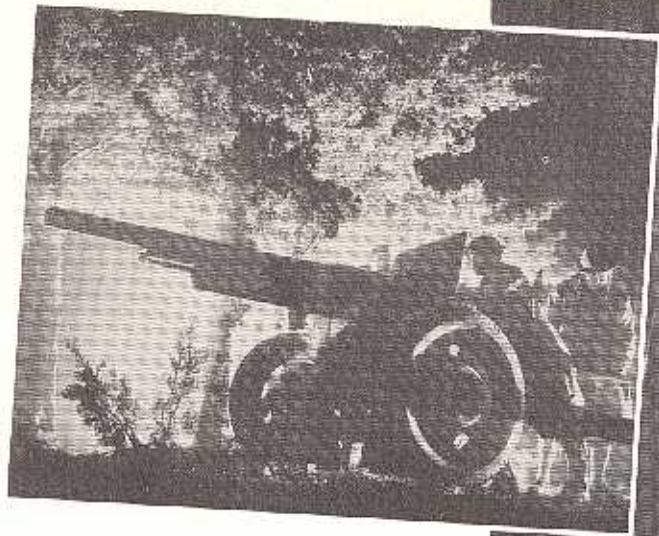
**COMMUNICATION**



**BAYONET PRACTICE**







## NIGHT TRAINING





*Published by*  
UNIVERSAL PRESS, SAN ANTONIO, TEXAS

Copyrighted, November 1941

